

5-7 CAPELLI ROAD
WINGFIELD SA 5013

SJ Enterprises
7 O'Connor Court
GEPPS CROSS SA

For Enquiries
PHONE A/C 02-87880000
PHONE SERVICE 08-81696400
FAX ACCOUNTS 08-83594542

Customer Feedback
PHONE 1300 137 838
EMAIL customerfeedback@crowm.com
Customer No. 313534
Reference No. SJC-X7523064

ORDER DATE	ORDER NO.	INVOICE DATE	JOB LOCATION	JOB ADDRESS
3/08/2023	Na	3/08/2023	*GEPPS CROSS SA	7 O'Connor Court GEPPS CROSS SA
FLEET No.	SERIAL NUMBER	MODEL NUMBER	PREVENTATIVE MAINTENANCE CHARGES	5094
	6110095	NONCROWN		

PART NUMBER	DESCRIPTION	LOC	QTY.	UNIT PRICE	TOTAL PRICE
00001	LABOUR <i>Accounts Payable Please note that a service charge has been made on this invoice as per your PMP agreement.</i>	320			254.60
WASTE-01	ENVIRONMENTAL CHARGE		1	13.50	13.50
FUEL-01	FUEL SURCHARGE		1	3.25	3.25
SUPPLIES-01	SUNDRIES AND CONSUMABLES		1	21.00	21.00

Supply Value	\$ 292.35	GST RATE 10.0 %	GST AMOUNT	29.24
			TOTAL INVOICE AMOUNT	AUD 321.59

Payment due date is 2/09/2023.

Please pay on this invoice.
No statement will be issued.

Additional Surcharge on Credit Card payments

- AMEX - 2.2%
- Visa/Master Credit Card - 1.1%

NOTE: This invoice includes a Fuel Surcharge due to the ongoing spike in fuel prices across the country.

FOR ALL DIRECT DEPOSITS

Please remit funds to Crown Equipment Pty Ltd
Bank Name: National Australia Bank
BSB No: 082-276
Account No: 509265108
Please email remittance advice to banking@crowm.com
or fax remittance advice to (02) 8788-0642.

Crown Equipment Pty Ltd
ABN 79 000 514 858

5-7 CAPELLI ROAD
WINGFIELD SA 5013

Invoice to:
SJ Enterprises
7 O'Connor Court
GEPPS CROSS SA

5094

Job Address:
7 O'Connor Court
GEPPS CROSS SA

5094

Job Number: X 7523064

Date: 03/08/2023

Time: 14:22

Order Number: Na

34 - PREVENTIVE MAINT.

Model: TOYOTA SWE120S

Serial Number: 6110095

Fleet Number:

Reference No.: L69204

PART NUMBER	DESCRIPTION	QTY	LOCATION
00001	LABOUR	1.00	
WASTE-01	ENVIRONMENTAL CHARGE		
FUEL-01	FUEL SURCHARGE		
SUPPLIES-01	SUNDRIES AND CONSUMABLES		
	TOTAL LABOUR HOURS	1.00	

SERVICE REQUEST:

Repair Notes:

Located unit and brought to work area. Blew out unit and greased all appropriate locations. Battery terminals corroded. Unable to take specific gravity reading as there was no water in battery. Throttle toggles loose, left side broken. 4/5m m remaining on lift pump motor brushes. Removed plastic from load wheel axles, slight nicks, and cracks in edge of load wheels. Chains stretched 0.6%.

CUSTOMERS NAME: Son

SIGNATURE: 

DATE: 03/08/2023

BATTERY DETAILS			CHARGER DETAILS	
	BATTERY #1	BATTERY #2	MANUFACTURER	.
MODEL	.	.	MODEL	.
SERIAL	.	.	SERIAL	.
AMP HRS	.	.	TEST TAG DATE	.
DATE CODE	.	.	HOUR METER	
SPECIFIC GRAVITY	.000	.000	1107	
VOLT STATIC	24.4	.0		
VOLT U/LOAD	21.1	.0		

SERVICEMAN	LABOUR	TRAVEL	TOTAL	WARRANTY TYPE	FAILURE CODE	FAIR WEAR
2373	1.0	.0	1.0	01		Y
				OFFICE USE ONLY:		
TOTAL	1.0	.0	1.0			

Crown Equipment Pty Ltd
ABN 79 000 514 858

5-7 CAPELLI ROAD
WINGFIELD SA 5013

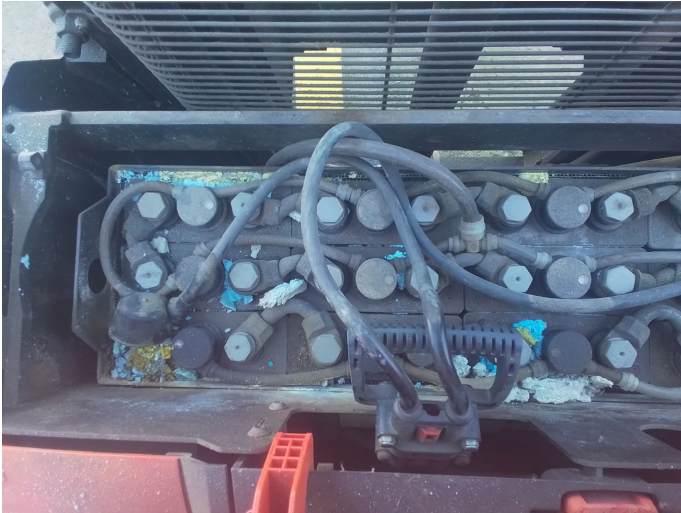
SERVICE JOB REPORT

Job Number: X 7523064

Date: 03/08/2023

Time: 14:22

Order Number: Na



ST/SX 3000 Series

Customer: 313534 SJ Enterprises

Job Number: X 7523064

DESCRIPTION	INSP	ACT	DESCRIPTION	INSP	ACT	DESCRIPTION	INSP	ACT
VISUAL INSPECTION			Power Cable Connections Secure	✓		Travel Alarm (Optional)		NA
Oil Leaks	✓		Wiring Conditions	✓		Flashing Light (Optional)		NA
Mast Assembly & Guard	✓		Wiring Connections Secure	✓		ATTACHMENTS		
Load Backrest (Optional)	✓		Wiring Harness Condition	✓		Operation	✓	
Forks & Latches	✓		Remote Coil Cord & Switch Cond	✓		Leaks	✓	
Limit Switch	✓		CONTACTOR PANEL & POWER CONTAC			Condition	✓	
Lift Chain & Mounts	✓		Line Contactor Tip Condition	✓		CUSTOMER CARE		
Control Arm & Handle	✓		Pump Contactor Tip Condition	✓		Wipe Off Truck	✓	
Tyre & Wheel Condition			TRACTION CONTROLLER			Clean Area	✓	
-LH Load Wheel	✓		Creep Speed	✓				
-LH Caster (Optional)		NA	Plugging	✓				
-Drive Tyre & Lug Bolts	✓		Blow Dust Off Panel	✓				
-RH Caster (Optional)		NA	CONTROL HANDLE					
-RH Load Wheel	✓		Switch Condition	✓				
Safety Decals & Capacity Plate	✓		Switch Adjustment	✓				
Bent or Damage Parts	✓		Potentiometer	✓				
Tape, String, etc. Around Driv		A	Spring Return	✓				
Battery Cable Condition (Truck	✓		BRAKES					
Battery Connector Condition (T	✓		Adjustment	✓				
Battery Retainers	✓		Friction Plate	✓				
CLEAN & LUBRICATE			Rotor	✓				
Blow Off Truck	✓		Hub Key	✓				
Lubricate			Mounting Screws	✓				
-Lubricate Mast & Roller Assem	✓		Electrical Connection	✓				
-Caster Wheels		NA	Switch	✓				
-Steer Bearing	✓		MAST ASSEMBLY					
-Control Handle Coil Springs		NA	Roller & Tracking - Wear or Da	✓				
-Lubricate Lift Chains	✓		Lift Chain Condition - Wear	✓				
-Load Wheel Bearings	✓		Lift Chain Adjustment	✓				
-Mast Free Lift Stud (TT)	✓		Lift Cylinder & Mount Conditio	✓				
Apply Armorall or Clear Guard	✓		Mounting Bolts to Power Unit S	✓				
HYDRAULIC SYSTEM			Control Cables & Hoses	✓				
Pump & Motor Mounting Secure	✓		Limit Switch	✓				
Oil Level & Condition	✓		Load Backrest Secure (Optional)	✓				
Hoses & Fitting Condition	✓		Poly Stops	✓				
Leaks-Cylinder, etc.	✓		FREEZER CONDITION (Optional)					
Breather Cap	✓		Heater Operation		NA			
Suction & Return Filters	✓		Wiring Condition		NA			
Brush & Armature Condition	✓		OPERATIONAL CHECK & TEST DRIVE					
Blow Brush Dust From Motor	✓		BDI or Hour Meter (Optional)	✓				
DRIVE UNIT			Horn	✓				
Fluid Level	✓		Safety Reversing Switch	✓				
Leaks	✓		Lift - Lower Operation	✓				
Motor Mounting Secure	✓		Power Disconnect	✓				
Brush & Armature Condition	✓		Verify Brake Operation	✓				
Mounting to Power Unit Secure	✓		Stopping Distance	✓				
Blow Brush Dust From Motor	✓		Brake Switch	✓				
Steer Bearings	✓		Limit Switch Cut-Out	✓				
Wheel Lug Bolts	✓		Travel Speeds	✓				
POWER CABLES & CONTROL WIRING			Rated Capacity	✓				
Power Cable Conditions	✓		Charger	✓				

Component identification and location with regards to appropriate inspection and action codes:

VISUAL INSPECTION, Tyre & Wheel Condition, LH Caster (Optional), Not Applicable.
 VISUAL INSPECTION, Tyre & Wheel Condition, RH Caster (Optional), Not Applicable.
 VISUAL INSPECTION, Tape, String, etc. Around Drive Axle & Load Wheels, Adjust.
 CLEAN & LUBRICATE, Lubricate, Caster Wheels, Not Applicable.
 CLEAN & LUBRICATE, Lubricate, Control Handle Coil Springs, Not Applicable.
 FREEZER CONDITION (Optional), Heater Operation, Not Applicable.

ST/SX 3000 Series

Customer: 313534 SJ Enterprises

Job Number: X 7523064

FREEZER CONDITION (Optional), Wiring Condition, Not Applicable.
OPERATIONAL CHECK & TEST DRIVE, Travel Alarm (Optional), Not Applicable.
OPERATIONAL CHECK & TEST DRIVE, Flashing Light (Optional), Not Applicable.