



DISCLAIMER: Second-Hand Plant Condition and Safety

This document is Jungheinrich Australia Pty Ltd's (**Jungheinrich**) official notice that the second-hand plant offered for sale through this transaction (direct sale or auction) may contain faults or deficiencies that could pose risks to health and safety.

Important Information

Safety & Compliance of the Plant

Given the plant is second-hand, please be aware it may include wear and tear, or be missing safety features that were not present or required at the time of original manufacture.

Jungheinrich has taken all reasonably practicable steps to identify any faults in the plant. The **enclosed** Condition Report sets out the current condition of this plant, including any identified faults.

While all efforts have been made to identify faults, there may be other faults present that did not show up at time of inspection

Operational Safety Notice

The plant should not be used until all identified faults have been rectified and the equipment is deemed safe for operation.

It is the responsibility of the purchaser to ensure that the plant is inspected, serviced, and, if necessary, modified to meet current safety standards before use.

By participating in this sale and purchasing the second-hand plant, the purchaser acknowledges receipt of this notice and accepts full responsibility for ensuring the plant is safe for use.

Operating condition of the plant

Note: this condition report is a safety report only and does not represent overall appearance or operating condition of the plant

For any questions please contact Jungheinrich



Complete

ETR340

Photo 5



Photo 6

Observations Summary

Truck Category	Category 5 - Electric Reach Truck
Emergency Stop, Horn/Warning device, lights, reverse alarm and flashing lights operational	Yes
Foot switch allows operation only when depressed	Yes
Seat switch and seat belt operate sequentially (site dependent)	N/A
Mast switch operation for travel speed reduction to 3km/h above specified height	Yes
Are brakes and park brake functioning correctly?	Yes
Are tyre treads within limits and/or free from damage?	Yes
Are fork tynes in good condition and within specification?	No
Are mast chains in good condition, within specification and working correctly?	Yes
Are all controls inc. lift, tilt & sideshift/auxilliary functions working correctly	Yes
Confirm safety systems not bypassed or malfunctioning?	Yes

Additional Observations & Actions

List any other notable defects or faults e.g. ROPS/FOPS damage etc.

Replace castor wheel recommended.
Rear drive wheel needs replacing.

Technician Sign off



Isaac Puli
24/10/2025 8:37 AM AEDT

Media summary

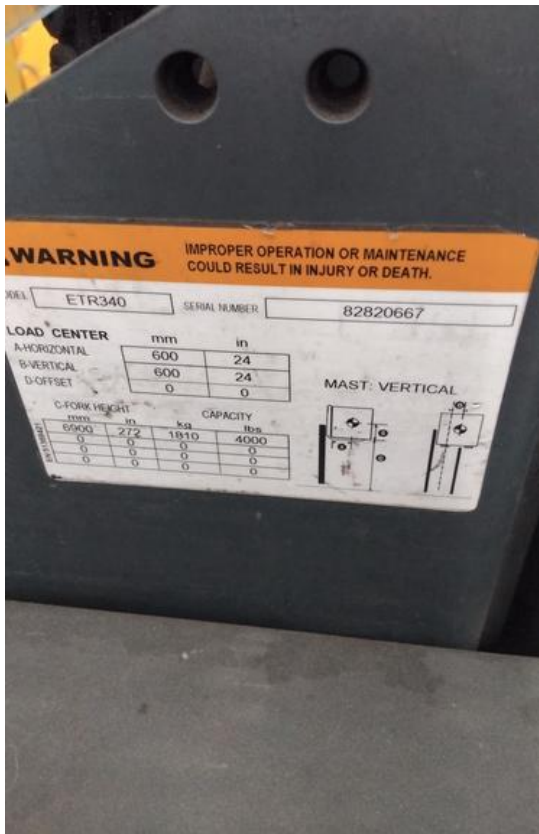


Photo 1



Photo 2



Photo 3



Photo 4



Photo 5



Photo 6