



DISCLAIMER: Second-Hand Plant Condition and Safety

This document is Jungheinrich Australia Pty Ltd's (Jungheinrich) official notice that the second-hand plant offered for sale through this auction may contain faults or deficiencies that could pose risks to health and safety.

Important Information

Condition of the Plant

Given the plant is second-hand, please be aware it may include wear and tear, or be missing safety features that were not present or required at the time of original manufacture.

Jungheinrich has taken all reasonably practicable steps to identify any faults in the plant. The enclosed Condition Report sets out the current condition of this plant, including any identified faults.

Identified specific faults are included in the supplied condition report

Operational Safety Notice

It is the responsibility of the purchaser to ensure that the plant is inspected, serviced, and, if necessary, modified to meet current safety standards before use. The plant should not be used until all identified faults have been rectified and the equipment is deemed safe for operation.

Manufacturer Information and Records

Any available records, including:

- information concerning each purpose for which the plant, was designed or manufactured;
- information concerning any conditions necessary to ensure that the plant is without risks to health and safety when used for the purposes for which it was designed or manufactured or when carrying out any activity; and
- calculations, analysis or testing records, including data sheets, test certificates, operation manuals, service reports, and safety manuals or guides are enclosed with the plant. Purchasers are encouraged to review this documentation thoroughly.

By participating in this auction and purchasing the second-hand plant, the purchaser acknowledges receipt of this notice and accepts full responsibility for ensuring the plant is safe for use.

For any questions please contact Jungheinrich

De-Hire Inspection Check

31/05/2025 / 383020 / Sydney / UE / Battery Electric / Fn942336 /
Jake Moss

Complete

Serial Number

Fn942336



Photo 1

Hour Meter Read

0 hr

Unable to get hour meter unit does not turn on



Photo 2

Service Job No.

383020

Location

Sydney

Conducted on

31/05/2025 6:41 AM ACST

Conducted By

Jake Moss

Truck Category

UE

Truck Make

Battery Electric

Equipment Exterior

General Appearance / Paintwork

WEAR & TEAR

Paint peeling and rust present



Photo 3



Photo 4



Photo 5



Photo 6

Include Images of the Front, Rear & Sides of the Unit



Photo 7



Photo 8



Photo 9



Photo 10

Wheels/Tyres

Front Wheels / Tyres

OK

Rear Wheels / Tyres

WEAR & TEAR

Starting to crack



Photo 11

Wheel Bearings

Unable to test as unit does not run

N/A

Chassis/Structure

Overhead Guard

Paint peeling and surface rust present

WEAR & TEAR



Photo 12

Chassis

Paint peeling surface rust present

WEAR & TEAR



Photo 13



Photo 14



Photo 15

Battery Cover

N/A

Driver Seat & Fixing

OK

Panels and Covers (Left & Right)


Right hand side cover damaged

WEAR & TEAR



Photo 16

Accessories (Mirrors, Blue Lights)	N/A
Unable to test lights as unit does not turn on	
Windscreen	N/A
Rear Screen	N/A
Arm Rest	N/A
Connection Elements	OK
Drive Unit	
Transmission Operation	N/A
Unable to test unit does not turn on	
Transmission Noise & Leaks	N/A
Unable to test unit does not turn on	
Drive Motor Condition	N/A
Unable to test unit does not turn on	
Brake	
Brake Function & Adjustment	N/A
Unable to test unit does not turn on	
Steering	
Steer Motor Operation/Noise	N/A
Unable to test unit does not turn on	
Steering Cylinder	N/A
Unable to test unit does not turn on	
Steer Axle	N/A
Unable to test unit does not turn on	
Steering Wheel/Controls	N/A

Hoist Frame/Load Lifting Device	
Mast To Full Height & Bearings Unable to test unit does not turn on	N/A
Forks & Fork Carriage Unable to test unit does not turn on Tynes missing 	N/A
Photo 17	
Lift Chains Free & Secondary	OK
Hydraulic Cylinder Free Lift Unable to test unit does not turn on	N/A
Hydraulic Cylinders Secondary Light Right & Left Unable to test unit does not turn on	N/A
Hydraulic Hoses Conditions	OK
Reach Carriage & Cylinder	N/A
Sideshift Carriage & Cylinder Unable to test unit does not turn on	N/A
Tilt Function & Cylinders Unable to test unit does not turn on	N/A
Hydraulic System	
Valve Block Unable to test unit does not turn on	N/A
Pump Motor Operation Unable to test unit does not turn on	N/A
Pump Operation Unable to test unit does not turn on	N/A
Hydraulic Function Levers Unable to test unit does not turn on	N/A

Electric System	
Multi-pilot & Solo-pilot	N/A
Strobe & Working Lights / Alarms	N/A
Unable to test unit does not turn on	
Drive Display, Console & Instruments	N/A
Unable to test unit does not turn on	
Main Contactor & Connectors	N/A
Unable to test unit does not turn on	
Charger Condition & Operation	N/A
No charger present with unit	
Battery	
Battery Condition & Cables	WEAR & TEAR
Battery has low voltage will not turn unit on	
Battery Carriage	N/A
Battery Lock System	OK
Additions or Attachments	
Any other related attachments	No
Were any issues identified?	Wear & Tear
Unit does not turn on requires diagnosis unable to carry out function tests Tyres missing	
(Internal) Parts required - BE	
Tyres 51204480	
Tyres missing	

Media summary

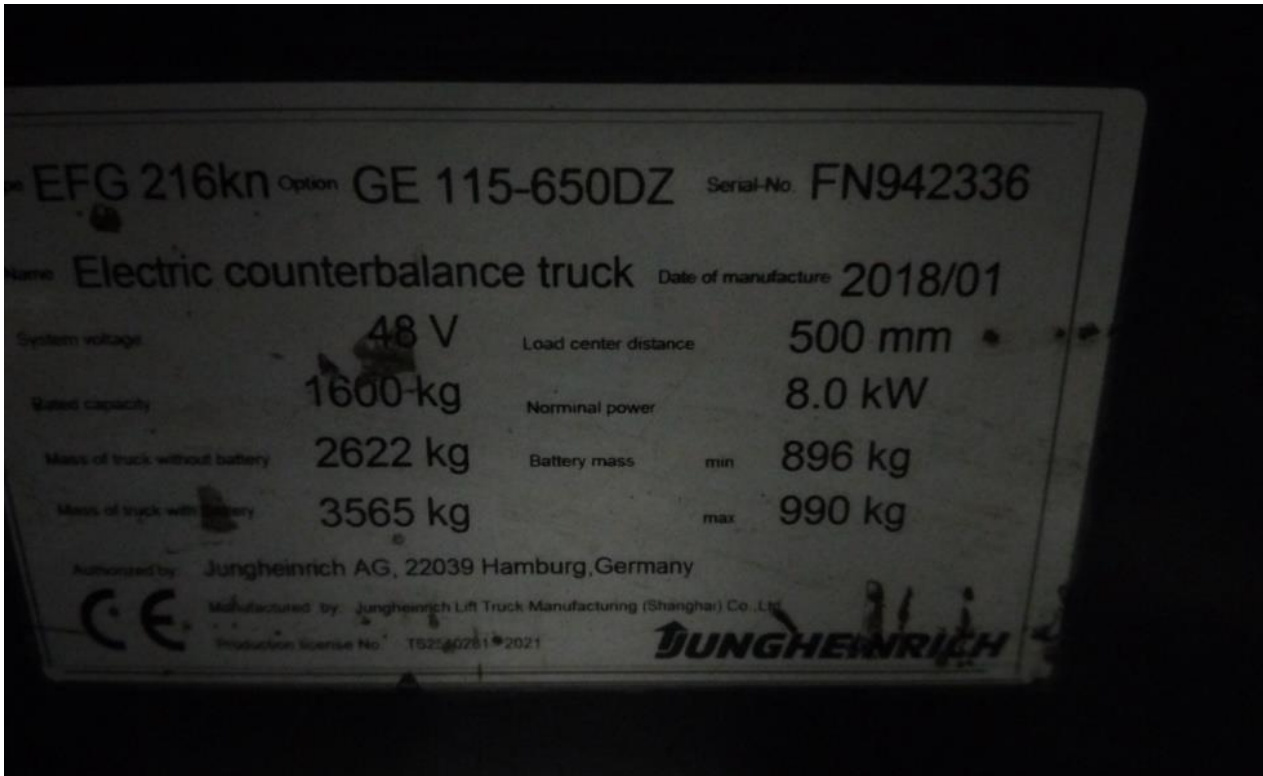


Photo 1



Photo 2

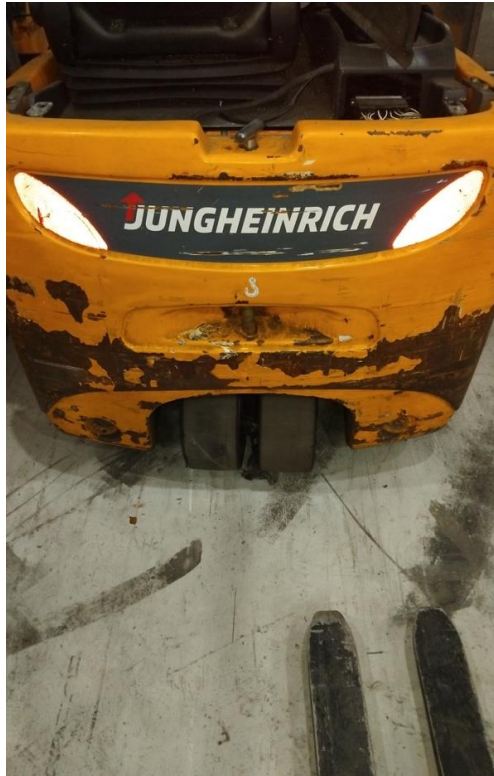


Photo 3



Photo 4

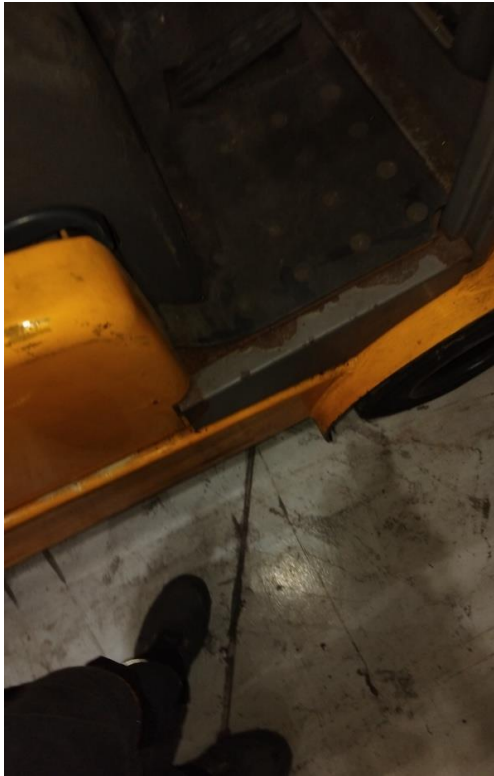


Photo 5



Photo 6



Photo 7



Photo 8



Photo 9



Photo 10



Photo 11



Photo 12



Photo 13



Photo 14



Photo 15



Photo 16



Photo 17