



DISCLAIMER: Second-Hand Plant Condition and Safety

This document is Jungheinrich Australia Pty Ltd's (Jungheinrich) official notice that the second-hand plant offered for sale through this auction may contain faults or deficiencies that could pose risks to health and safety.

Important Information

Condition of the Plant

Given the plant is second-hand, please be aware it may include wear and tear, or be missing safety features that were not present or required at the time of original manufacture.

Jungheinrich has taken all reasonably practicable steps to identify any faults in the plant. The enclosed Condition Report sets out the current condition of this plant, including any identified faults.

Identified specific faults are included in the supplied condition report.

Operational Safety Notice

It is the responsibility of the purchaser to ensure that the plant is inspected, serviced, and, if necessary, modified to meet current safety standards before use. The plant should not be used until all identified faults have been rectified and the equipment is deemed safe for operation.

Manufacturer Information and Records

Any available records, including:

- information concerning each purpose for which the plant was designed or manufactured;
- information concerning any conditions necessary to ensure that the plant is without risks to health and safety when used for the purposes for which it was designed or manufactured or when carrying out any activity; and
- calculations, analysis or testing records, including data sheets, test certificates, operation manuals, service reports, and safety manuals or guides are enclosed with the plant. Purchasers are encouraged to review this documentation thoroughly.

By participating in this auction and purchasing the second-hand plant, the purchaser acknowledges receipt of this notice and accepts full responsibility for ensuring the plant is safe for use.

For any questions please contact Jungheinrich

De-Hire Inspection Check

26/06/2025 / 385604 / Sydney / UE / Battery Electric / 90646464 /
Artemio Drio

Complete

Serial Number	90646464
Hour Meter Read	2625 hr
Service Job No.	385604
Location	Sydney
Conducted on	26/06/2025 2:35 PM ACST
Conducted By	Artemio Drio
Truck Category	UE
Truck Make	Battery Electric
Equipment Exterior	
General Appearance / Paintwork	WEAR & TEAR

Include Images of the Front, Rear & Sides of the Unit



Photo 1



Photo 2



Photo 3



Photo 4

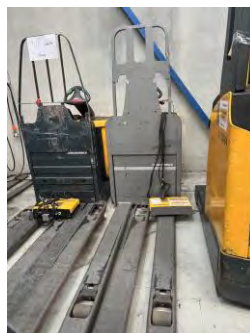


Photo 5



Photo 6



Photo 7



Photo 8

Wheels/Tyres

Front Wheels / Tyres

OK



Photo 9



Photo 10

Rear Wheels / Tyres

WEAR & TEAR



Photo 11

Wheel Bearings

OK

Chassis/Structure

Overhead Guard

N/A

Chassis

CUSTOMER DAMAGE

Dent front LH bottom of chassis . Stickers/ adhesives / Scratch around truck . Front cover dents .



Photo 12



Photo 13



Photo 14



Photo 15



Photo 16



Photo 17



Photo 18





Photo 19



Photo 20

Battery Cover	OK
Driver Seat & Fixing	N/A
Panels and Covers (Left & Right)	N/A
Clip missing .	
	
Photo 21	
Accessories (Mirrors, Blue Lights)	N/A
Windscreen	N/A
Rear Screen	N/A

Arm Rest	N/A
Connection Elements	OK
Drive Unit	
Transmission Operation	OK
Transmission Noise & Leaks	OK
Drive Motor Condition	OK
Brake	
Brake Function & Adjustment	OK
Steering	
Steer Motor Operation/Noise	OK
Steering Cylinder	N/A
Steer Axle	OK
Steering Wheel/Controls	OK
Hoist Frame/Load Lifting Device	
Mast To Full Height & Bearings	OK
Forks & Fork Carriage	OK
Lift Chains Free & Secondary	OK
Hydraulic Cylinder Free Lift	OK
Hydraulic Cylinders Secondary Light Right & Left	N/A
Hydraulic Hoses Conditions	OK
Reach Carriage & Cylinder	N/A
Sideshift Carriage & Cylinder	OK
Tilt Function & Cylinders	N/A
Hydraulic System	
Valve Block	OK
Pump Motor Operation	OK

Pump Operation	OK
Hydraulic Function Levers	OK
Electric System	
Multi-pilot & Solo-pilot	N/A
Jet pilot	
Strobe & Working Lights / Alarms	N/A
Drive Display, Console & Instruments	WEAR & TEAR
Vertical lines on display.	
	
Photo 22	
Main Contactor & Connectors	OK
Charger Condition & Operation	OK
Test and tag expires Aug 2025 .	
	
Photo 23	
Battery	
Battery Condition & Cables	OK
Battery Carriage	OK
Battery Lock System	OK
Additions or Attachments	
Any other related attachments	No

Were any issues identified?

Wear & Tear

(Internal) Parts required - BE

Front chassis LH bottom dent & front cover RH dent

Stickers/adhesives around truck

Scratches especially on the front frame

Painting

Display with vertical lines



Photo 24



Photo 25

Media summary



Photo 1



Photo 2



Photo 3



Photo 4

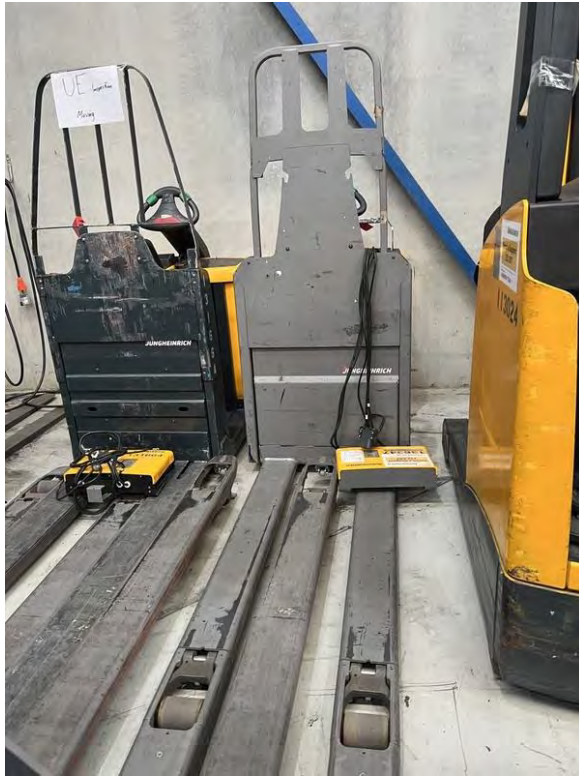


Photo 5

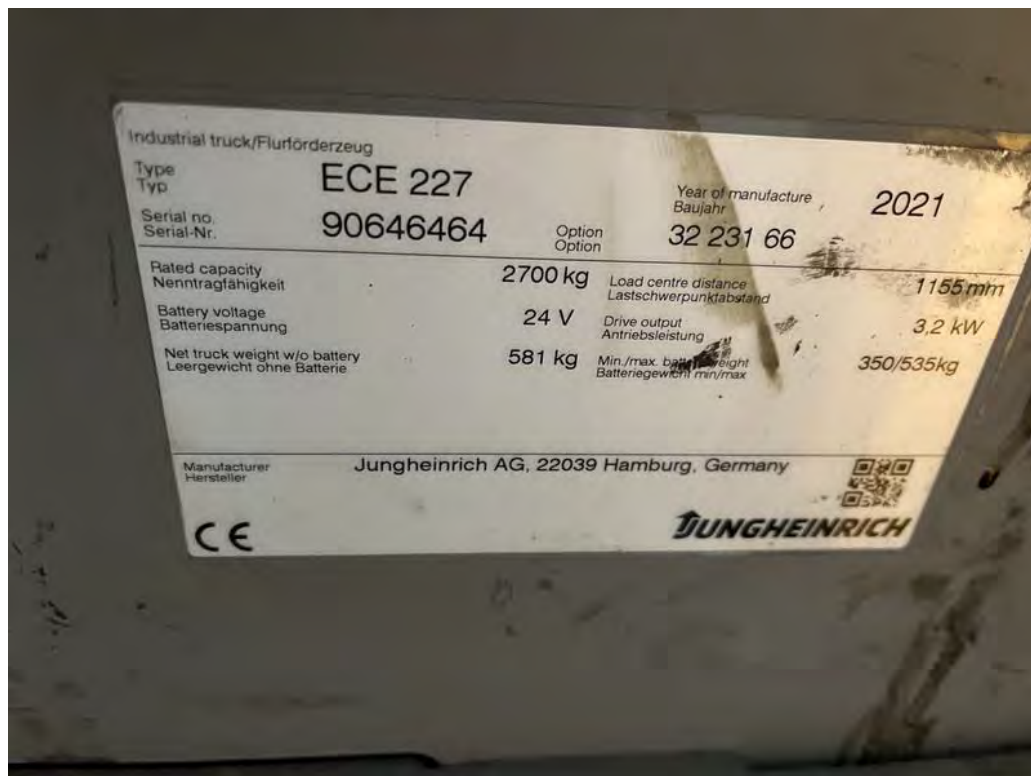


Photo 6



Photo 7



Photo 8



Photo 9



Photo 10



Photo 11



Photo 12



Photo 13



Photo 14



Photo 15



Photo 16

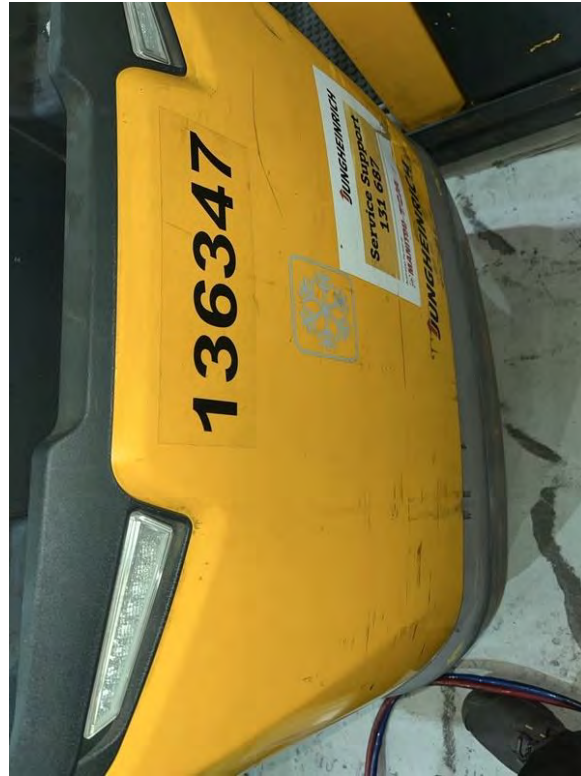


Photo 17



Photo 18



Photo 19



Photo 20



Photo 21



Photo 22



Photo 23



Photo 24



Photo 25