



#### **DISCLAIMER: Second-Hand Plant Condition and Safety**

This document is Jungheinrich Australia Pty Ltd's (Jungheinrich) official notice that the second-hand plant offered for sale through this auction may contain faults or deficiencies that could pose risks to health and safety.

#### **Important Information**

##### **Condition of the Plant**

Given the plant is second-hand, please be aware it may include wear and tear, or be missing safety features that were not present or required at the time of original manufacture.

Jungheinrich has taken all reasonably practicable steps to identify any faults in the plant. The enclosed Condition Report sets out the current condition of this plant, including any identified faults.

Identified specific faults are included in the supplied condition report

##### **Operational Safety Notice**

It is the responsibility of the purchaser to ensure that the plant is inspected, serviced, and, if necessary, modified to meet current safety standards before use. The plant should not be used until all identified faults have been rectified and the equipment is deemed safe for operation.

##### **Manufacturer Information and Records**

Any available records, including:

- information concerning each purpose for which the plant was designed or manufactured;
- information concerning any conditions necessary to ensure that the plant is without risks to health and safety when used for the purposes for which it was designed or manufactured or when carrying out any activity; and
- calculations, analysis or testing records, including data sheets, test certificates, operation manuals, service reports, and safety manuals or guides are enclosed with the plant. Purchasers are encouraged to review this documentation thoroughly

By participating in this auction and purchasing the second-hand plant, the purchaser acknowledges receipt of this notice and accepts full responsibility for ensuring the plant is safe for use.

For any questions please contact Jungheinrich

## De-Hire Inspection Check

31/05/2025 / 383032 / Sydney / UE / Battery Electric / Fn524156 /  
Bal Krishna

Complete

Serial Number

Fn524156

Hour Meter Read

9959 hr

Service Job No.

383032



Photo 1

Location

Sydney

Conducted on

31/05/2025 6:14 AM ACST

Conducted By

Bal Krishna

Truck Category

UE

Truck Make

Battery Electric



Photo 2

Equipment Exterior

General Appearance / Paintwork

WEAR & TEAR



Photo 3



Photo 4



Photo 5



Photo 6

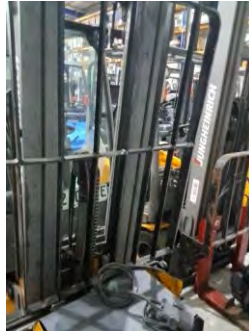


Photo 7



Photo 8

### Include Images of the Front, Rear & Sides of the Unit



Photo 9



Photo 10

### Wheels/Tyres

#### Front Wheels / Tyres

WEAR & TEAR

#### Rear Wheels / Tyres

OK



Photo 11



Photo 12



Photo 13





<b>Wheel Bearings</b>	OK
<b>Chassis/Structure</b>	
<b>Overhead Guard</b>	OK
 Photo 14  Photo 15	
<b>Chassis</b>	OK
<b>Battery Cover</b>	OK
<b>Driver Seat &amp; Fixing</b>	N/A
 Photo 16	
<b>Panels and Covers (Left &amp; Right)</b>	N/A
<b>Accessories (Mirrors, Blue Lights)</b>	OK
 Photo 17	
<b>Windscreen</b>	OK





Photo 18

## Rear Screen

OK



Photo 19



Photo 20

## Arm Rest

OK

## Connection Elements

OK

## Drive Unit

## Transmission Operation

N/A

## Transmission Noise & Leaks

N/A

## Drive Motor Condition

N/A

## Brake

## Brake Function & Adjustment

N/A

## Steering

## Steer Motor Operation/Noise

N/A

## Steering Cylinder

N/A

## Steer Axle

N/A

## Steering Wheel/Controls

N/A

## Hoist Frame/Load Lifting Device

**Mast To Full Height & Bearings**

N/A



Photo 21

**Forks & Fork Carriage**

OK



Photo 22

**Lift Chains Free & Secondary**

OK

**Hydraulic Cylinder Free Lift**

OK



Photo 23

**Hydraulic Cylinders Secondary Light Right & Left**

OK

**Hydraulic Hoses Conditions**

OK



Photo 24



Photo 25

<b>Reach Carriage &amp; Cylinder</b>	N/A
<b>Sideshift Carriage &amp; Cylinder</b>	OK
	
Photo 26	
<b>Tilt Function &amp; Cylinders</b>	N/A
Hydraulic System	
<b>Valve Block</b>	N/A
<b>Pump Motor Operation</b>	N/A
<b>Pump Operation</b>	N/A
<b>Hydraulic Function Levers</b>	N/A
Electric System	
<b>Multi-pilot &amp; Solo-pilot</b>	N/A
<b>Strobe &amp; Working Lights / Alarms</b>	N/A
<b>Drive Display, Console &amp; Instruments</b>	N/A
<b>Main Contactor &amp; Connectors</b>	N/A
<b>Charger Condition &amp; Operation</b>	N/A
Battery	
<b>Battery Condition &amp; Cables</b>	N/A
<b>Battery Carriage</b>	OK
<b>Battery Lock System</b>	N/A



Photo 27

Additions or Attachments

Any other related attachments

No

Were any issues identified?

Wear & Tear

(Internal) Parts required - BE

Na



Media summary



Photo 1



Photo 2

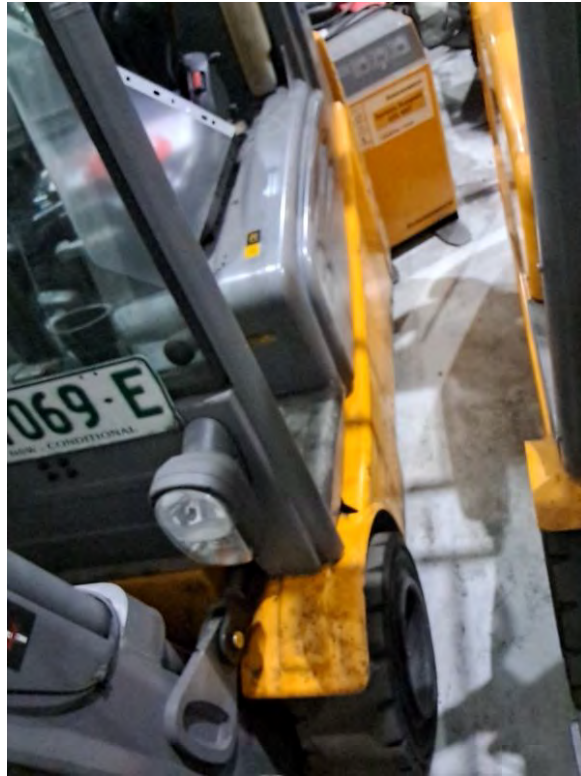


Photo 3



Photo 4



Photo 5



Photo 6



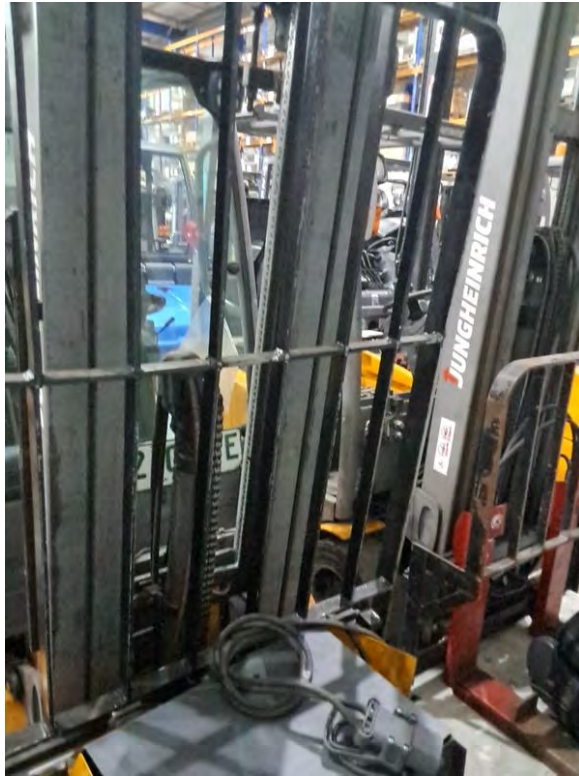


Photo 7



Photo 8



Photo 9



Photo 10





Photo 11



Photo 12

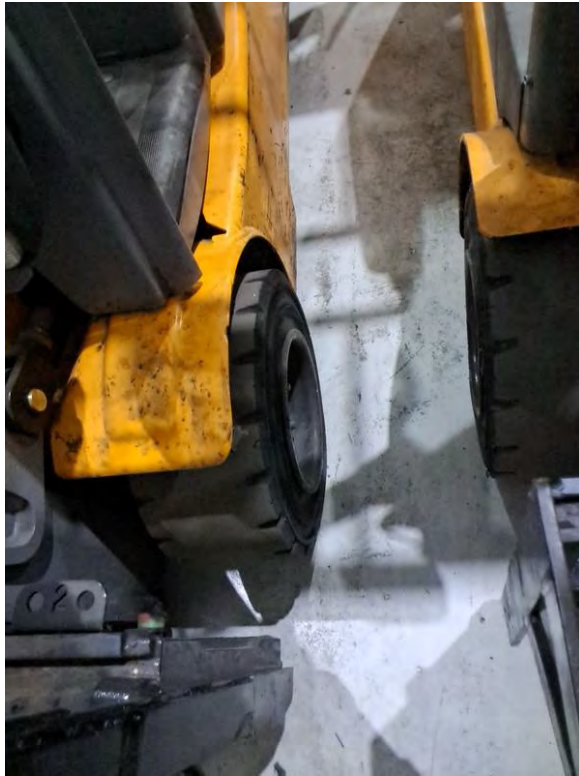


Photo 13



Photo 14



Photo 15



Photo 16





Photo 17



Photo 18



Photo 19



Photo 20





Photo 21



Photo 22

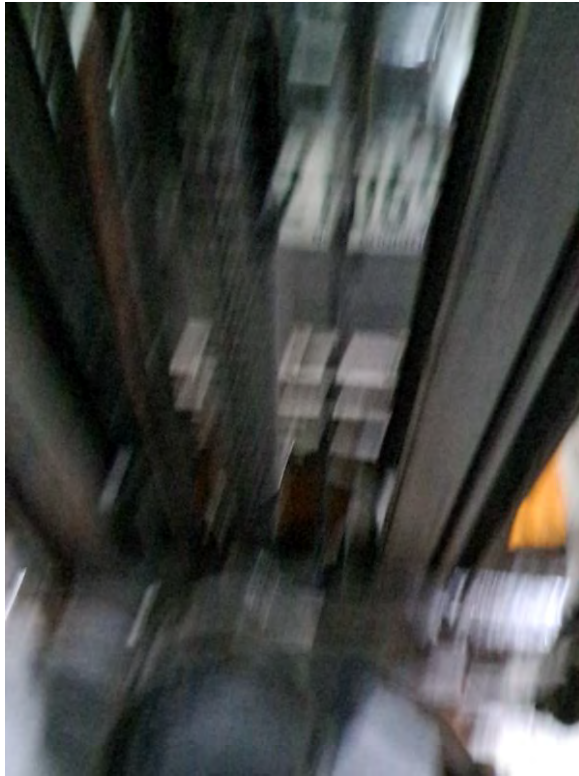


Photo 23



Photo 24



Photo 25



Photo 26



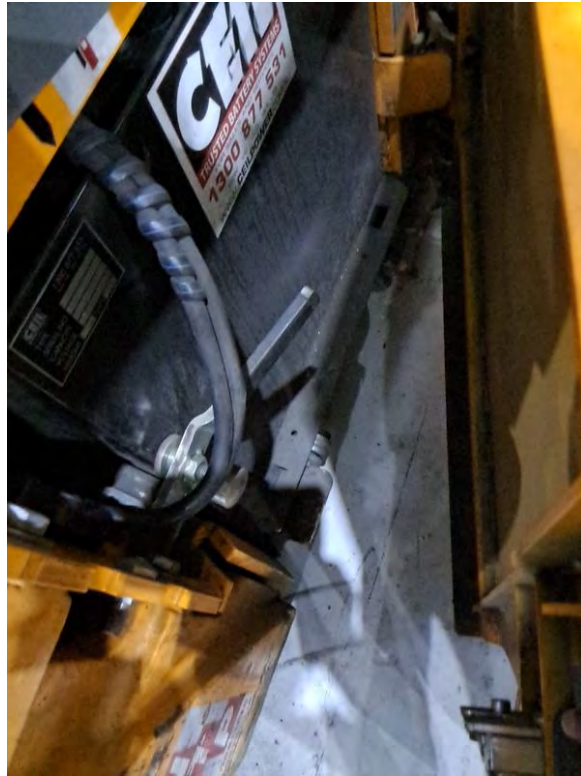


Photo 27