

# Condition Report



Service

**CSR LTD**  
*WA380-5 / H50383*

Australia - Ph: 1300 566 287 | [komatsu.com.au](http://komatsu.com.au)  
New Zealand - Ph: 0800 566 2878 | [komatsu.co.nz](http://komatsu.co.nz)  
New Caledonia - Ph: +687 43 53 06 | [komatsu.com.au](http://komatsu.com.au)

**KOMATSU**  
Creating value together



## General Information

<b>Case Number</b>	R1389790
<b>Date</b>	02/11/2022
<b>Equipment</b>	Wheel Loader
<b>Model</b>	WA380-5
<b>Serial No.</b>	H50383
<b>S.M.R</b>	13693

## Customer Details

<b>Customer Name</b>	
<b>Customer No.</b>	
<b>Location</b>	Rosehill
<b>Contact Name</b>	
<b>Contact No</b>	
<b>Contact Email</b>	

## Service Details

<b>Engine Serial No.</b>	
<b>Technician</b>	Alexandra Henley-Barker
<b>Supervisor</b>	David Lambourne
<b>Case Description</b>	
<b>Report Completed By</b>	Alexandra Henley-Barker
<b>Service Type</b>	
<b>Branch</b>	FAIRFIELD SERVICE
<b>Component Report Recommended</b>	
<b>Delivery Name</b>	

## Comments

### Urgent Attention

#### Component

Auto greaser system

#### Comments

Grease system pot is opaque, unable to tell grease level. Recommend further investigation and repair. Bucket pins dry and making high pitch noise when operated.

### Diagrams



### Urgent Attention

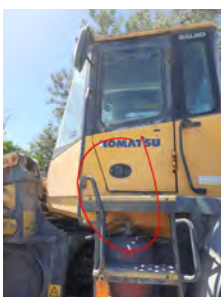
#### Component

Door Seals and latches in good condition and functioning to prevent dust entry into cabin

#### Comments

Main access LHS door is difficult to open, recommend further investigation and repair.

### Diagrams



### Urgent Attention

#### Component

Frame and work equipment

#### Comments

Bellcrank cracked, recommend immediate repair.

## Diagrams



### Urgent Attention

#### Component

Lockable panels

#### Comments

RHS door lock seized

## Diagrams



### Urgent Attention

#### Component

Machine camera's

#### Comments

Rear camera monitor displays no image, further investigation and repair recommended

## Diagrams



## Urgent Attention

### Component

Seat and seat belt

### Comments

Seat belt out of date and requires replacing immediately

## Diagrams



## Urgent Attention

### Component

Work equipment

### Comments

Bucket cylinder barrell end requires shimming. Articulation bearing extremely worn, recommend replacing immediately.

## Diagrams



## Urgent Attention

### Component

Horn and reversing alarms

### Comments

Reverse alarm does not sound, further investigation and repair recommended.

## Required - ASAP

Component	Comments
	Wheel chocks missing

### Diagrams



## Required - ASAP

Component	Comments
Access steps and handrail	Lhs and RHS lower access step damaged, recommend repair

### Diagrams



## Required - ASAP

Component	Comments
Engine - fluid leak	Starter motor leaking from seal. Oil leaking from sump



## Diagrams



### Required - ASAP

#### Component

Fuel system hoses and tubes

#### Comments

Fuel pump leaking, recommend further investigation and repair

## Diagrams



### Required - ASAP

#### Component

Lights, beacon and instruments

#### Comments

Front left cab work light out. RHS front indicator damaged and does not work. Further investigation and repair required

## Diagrams



### Required - ASAP

#### Component

Recirculation filters functioning correctly (Cabin fresh and clear of dust in air)

#### Comments

Cabin Recirculation filters require replacing.

## Diagrams



### Required - ASAP

#### Component

Throttle, travel movement, control levers

#### Comments

Bucket auto level not working. Transmission switch missing. Power switch knob missing.

## Diagrams







## Next Service

### Component

Outer body panels and paint

### Comments

Body panels damaged and paint damage as pictured below

## Diagrams



## This Service

### Component

AIR CONDITIONER

### Comments

A/C system fault diagnosed. Pressure test carried out, leak found in blocked evaporator core. Poor air flow a result of blocked evaporator core. Customer requests a quote for repair and repair to be scheduled.

## Diagrams



### Component

Photo of I.D Plate

### Comments

## Diagrams



### Component

Machine photos attached

### Comments

## Diagrams





## Terms and Conditions

### 1. Visual inspection

- a. This visual inspection report (**Inspection Report**) is strictly confidential and has been prepared by Komatsu Australia Pty Ltd (ABN 63 053 514 739) or Komatsu New Zealand Limited (NZBN 9429050679508) (**Komatsu**) for review only by the Customer named in the Report. This Inspection Report must not be provided to, or relied upon by, any other persons or organisations. Any person who reads the contents of this Inspection Report does so agreeing and acknowledging the scope, limitation and disclaimers set out in this Inspection Report. This Inspection Report must not be reproduced or copied, in whole or in part without the prior written consent of Komatsu.
- b. The scope of this Inspection Report is limited to completing a visual inspection and assessment of the specified machine (**Machine**) as at the date of inspection by Komatsu personnel within the scope of work agreed with the Customer, or for a "PM Clinic Report", "Defect Report", "New Machine Report", "Mining Hex UC Report", "Core Installation Report" or "Core Return Report" (as applicable), within the scope of work specified, or for a "Condition Report", "PM Service Report", "Rental Receiving Report", "Rental Delivery Report" or "Final Inspection Report" (as applicable), within the scope of work specified (as indicated by those inspection items marked as 'Yes' or 'No') (**Scope**). Komatsu will complete the Scope of this Inspection Report by observing and viewing the visual condition and status of the Machine at the date of the inspection. Any instrument readings, indicators, warning lights or other signaling devices on or in the Machine will be taken to be accurate without further investigation, in particular the Machine's hourly service meter unit (**SMU**) indicator will be taken to be accurate and representative of the actual number of hours performed by the Machine. Komatsu in no way represents or warrants the instruments, readings and/or data used to complete this Inspection Report are true and accurate.

### 2. Limitation of liability

To the extent permitted by law, Komatsu and the author of this Inspection Report expressly exclude all liability for loss, damage or injury, including Consequential Loss, whether under contract, tort, equity or otherwise, caused directly or indirectly by any errors in, omissions from, or actions taken or not taken because of the information or opinions provided in this Inspection Report. In this clause 2, "Consequential Loss" means all loss of actual or anticipated profit, loss of use, loss of productivity, loss of revenue, business interruption of any nature, loss of contracts, loss of opportunity, increased costs and expenses, wasted expenditure, loss or corruption of data, loss arising from delay, loss by reason of shutdown or non-operation or increased cost of borrowing capital or financing, loss of business reputation or goodwill and all special, indirect and consequential losses whether caused by or contributed to by a breach of contract or statute, breach of warranty (express or implied), tort, strict liability or any other cause whatsoever.

### 3. Disclaimer

- a. This Inspection Report is not an all-encompassing report dealing with the issues and defects under review from every aspect. It is a reasonable attempt to identify the condition of the Machine and/or any obvious or significant defects, faults or issues apparent at the time of the visual inspection and which are within the Scope. Where a defect or issue is identified it is recommended that prompt action is taken to investigate and appropriately rectify the identified defect or issue.
- b. No warranty is given as to the accuracy or completeness of the information provided in this Inspection Report, including any data, research, models, charts, forecasts, recommendations or other material and no responsibility is accepted by Komatsu or its employees, contractors or agents for any loss or damage arising from reliance on the information provided.
- c. No warranty is provided in relation to the Machine or any component of it.

## Terms and Conditions

### 4. Qualifications and assumptions

This Inspection Report and the opinions expressed in it are subject to the following qualifications and assumptions:

- a. that all information given to the author of this Inspection Report and Komatsu is correct, complete, reliable, not misleading (by omission or otherwise) and prepared with reasonable care; and
- b. any documents referred to, or relied upon in this Inspection Report have been assessed by the author at their face value and neither the author or Komatsu has made further investigations of the circumstances in which the documents were brought into existence unless this Inspection Report specifically provides otherwise.

### 5. Statutory warranties

All conditions and warranties of any type in relation to the goods or services are excluded to the maximum extent allowed by the law. Nothing in these terms and conditions limit those provisions of the Competition and Consumer Act 2010 (Cth), the Consumer Guarantees Act 1993 nor any other statutes, rules or regulations from time to time in force in Australia, New Zealand or New Caledonia which imply or guarantee certain conditions or warranties or impose obligations on Komatsu which conditions, warranties and obligations cannot, or cannot except to a limited extent be excluded, restricted or modified. If any such statutory provisions apply, then to the extent to which Komatsu is entitled to do so, its liability shall be limited at its option to: (a) in the case of goods: (i) the replacement of goods or the supply of equivalent goods; or (ii) the payment of the cost of replacing the goods or of acquiring equivalent goods; or (iii) the payment of the cost of having the goods repaired; or (iv) the repair of the goods; and (b) in the case of services: (i) the supply of the services again; or (ii) the payment of the cost of having the services supplied again.

### 6. General

If the Inspection Report is provided in Australia, the document is governed by the laws of New South Wales. These terms and conditions are in addition to Komatsu's Terms and Conditions - Parts and Service, available at <http://www.komatsu.com.au/Pages/Terms-and-Conditions.aspx>, which governs the provision of services provided by Komatsu (unless otherwise agreed in writing).

If the Inspection Report is provided in New Zealand, the document is governed by the laws of New Zealand. These terms and conditions are in addition to Komatsu's Terms and Conditions - Parts and Service, available at <https://www.komatsu.co.nz/pages/terms-conditions>, which governs the provision of services provided by Komatsu (unless otherwise agreed in writing).

If the Inspection Report is provided in New Caledonia, the document is governed by the laws of New Caledonia. These terms and conditions are in addition to Komatsu's General Terms and Conditions of Sale and of Provision of Services, which govern the provision of services provided by Komatsu (unless otherwise agreed in writing).