

# kinetex®

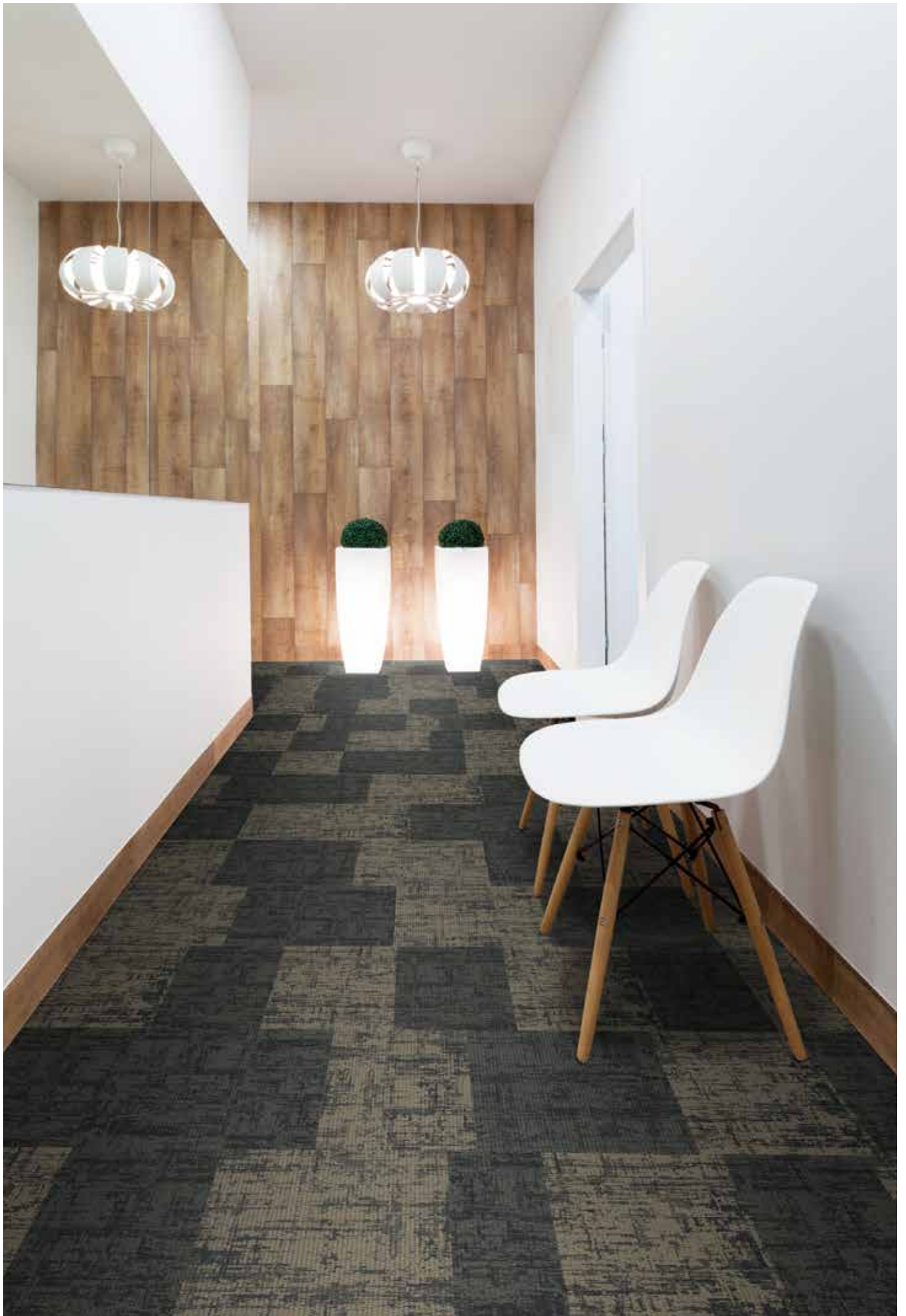
*Textile Composite Flooring*

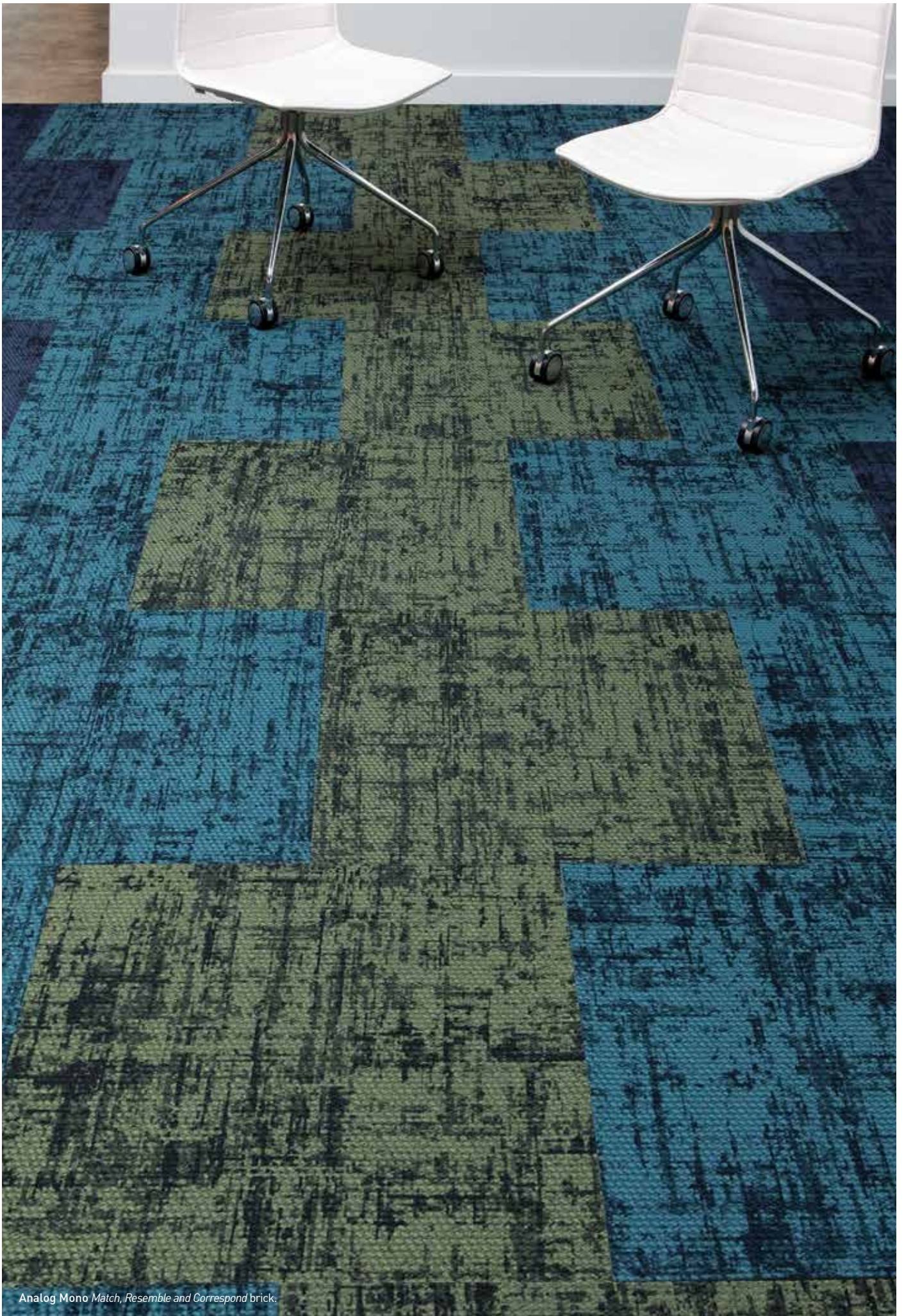
## ANALOG - ANALOG MONO



VISIONARY LIVING  
COMMERCIAL FLOORS  
& WALLS







Analog Mono Match, Resemble and Correspond brick.



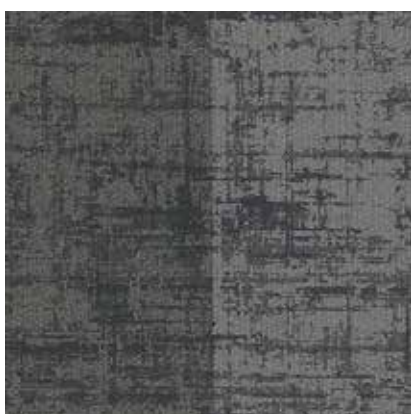
style 1821  
color 1544  
relate



style 1821  
color 1545  
similar



style 1821  
color 1546  
equate



style 1821  
color 1547  
assimilate



style 1821  
color 1548  
relate



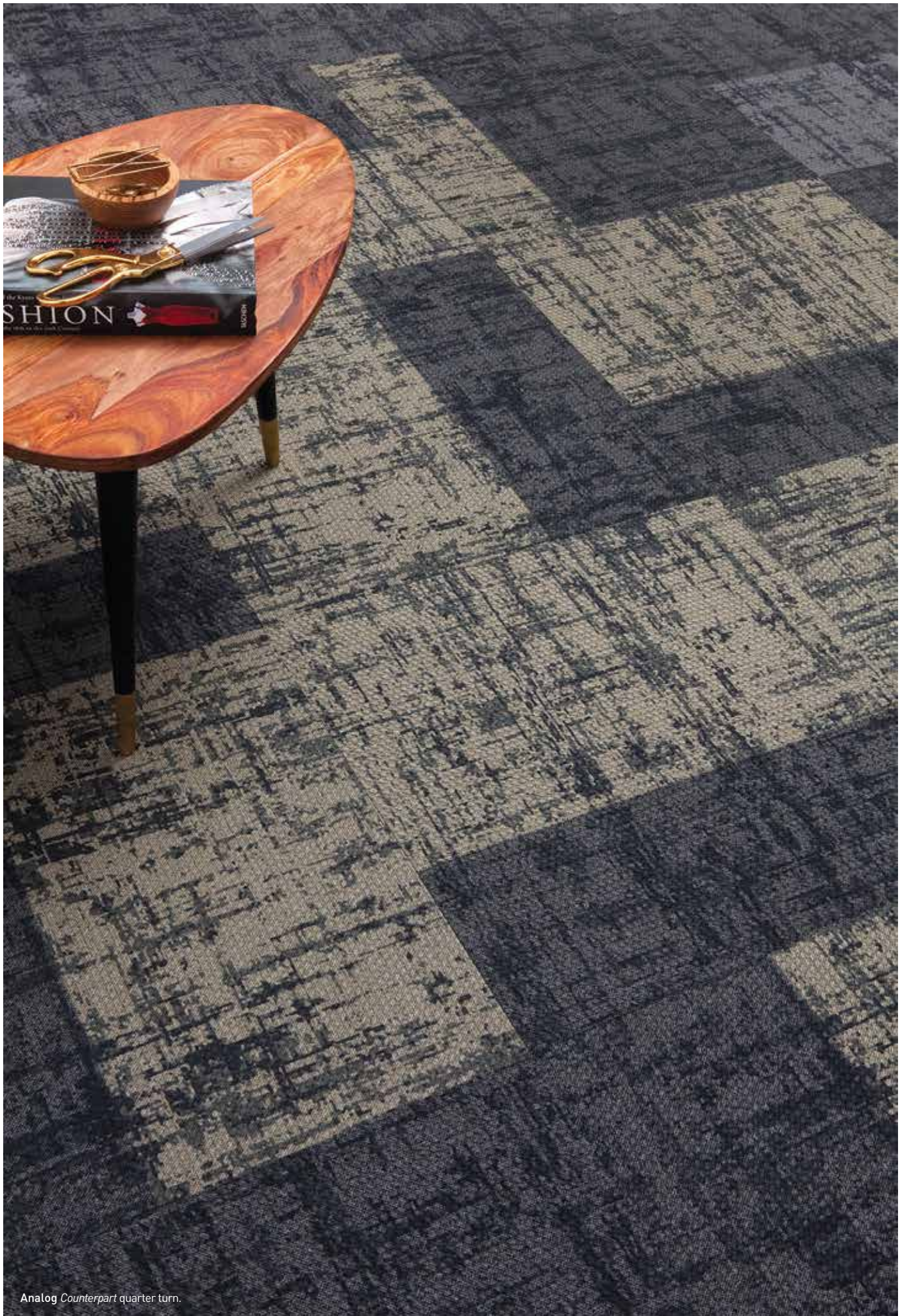
style 1821  
color 1549  
parallel



style 1821  
color 1550  
interact



style 1821  
color 1551  
counterpart



Analog Counterpart quarter turn.

# analog mono 1822



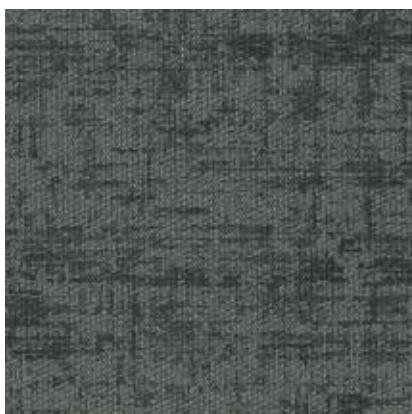
style 1822  
color 1552  
correlate



style 1822  
color 1553  
link



style 1822  
color 1554  
associate



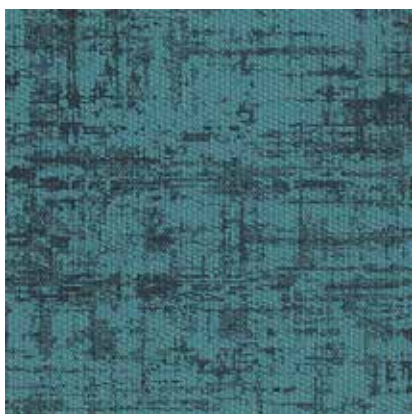
style 1822  
color 1555  
equivalent



style 1822  
color 1556  
regard



style 1822  
color 1557  
correspond



style 1822  
color 1558  
resemble



style 1822  
color 1559  
match



*Analog Equate and Interact, quarter turn.*





# colorline overview

## *analog 1821*



1544  
relate



1545  
similar



1546  
equate



1547  
assimilate



1548  
connect



1549  
parallel



1550  
interact



1551  
counterpart

## *analog mono 1822*



1552  
correlate



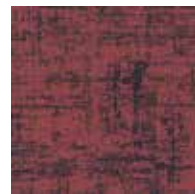
1553  
link



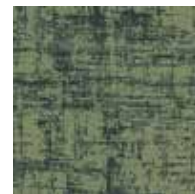
1554  
associate



1555  
equivalent



1556  
regard



1557  
correspond



1558  
resemble



1559  
match

## *coordinating palette*



1822 analog mono  
1552 correlate



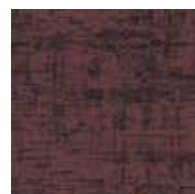
1822 analog mono  
1558 resemble



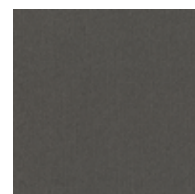
1821 analog  
1544 relate



1821 analog  
1548 connect



1822 analog mono  
1556 regard



1817 propel  
1702 guide

## where to use kinetex

### Healthcare

Acute care hospitals, medical office buildings, urgent care clinics, outpatient surgery centers, outpatient physical therapy/rehab centers, outpatient imaging centers, etc.

- Cafeteria, dining areas
- Chapel
- Computer room
- Corridors
- Diagnostic imaging suites
- Dry physical therapy
- Elevators
- Exam/procedure rooms
- Gift shops
- Hyperbaric treatment rooms
- Lobbies
- Nursing stations
- Offices/administration / conference rooms
- Patient rooms (family areas)
- Pharmacy
- Ramps/ramped corridors
- Staff lounge
- Waiting rooms

### Education

Early childhood development centers, preschool, k-12, higher education

- Auditoriums
- Classrooms/lecture halls
- Computer classrooms
- Student Accommodation
- Food service areas
- Multipurpose rooms/cafetorium
- Ramps/ramped corridors
- Faculty/administrative offices
- Faculty lounge
- Libraries
- Innovation Hubs

### Commercial Offices

Offices, call centers

- Offices
- Waiting areas
- Corridors
- Conference rooms
- Copy/mail rooms
- Break rooms
- Computer rooms

### Fitness Centers

Health Clubs/Gyms

- Cardio Centers
- Dry Locker Room Areas
- Snack Bars
- Offices

### Retail/Mercantile

Wholesale/Retail merchants

- Checkout/cash wrap
- Dressing rooms
- Sales floor
- Offices
- Employee break areas

### Hospitality

Hotels

- Corridors
- Conference rooms
- Guest rooms
- Dining rooms
- Business centers
- Activity rooms
- Common areas
- Computer rooms

### Transportation/ Public Venues

Airports, bus/train stations, performing arts centers, athletic arenas

- Ticketing/baggage claim
- Concourses
- Jetways
- Conference rooms
- Waiting areas
- Administrative offices
- Airport lounges
- Chapel
- Large public spaces
- Theaters

## kinetex overview



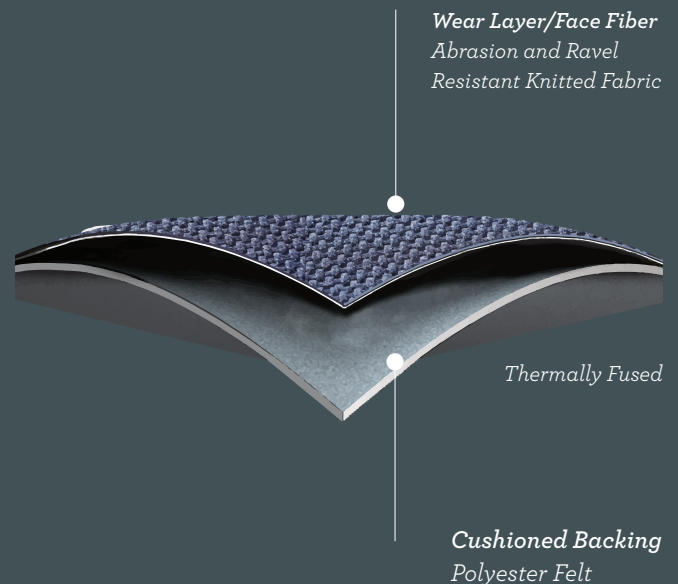
Kinetex® is an advanced textile composite flooring that combines key attributes of soft-surface floor covering with the long-wearing performance characteristics of hard-surface flooring. Created as a unique floor covering alternative to hard-surface products,

J+J Flooring Group's Kinetex encompasses an unprecedented range of performance attributes for retail, healthcare, education and institutional environments. In addition to its human-centered qualities and highly functional

design, Kinetex offers a reduced environmental footprint compared to traditional hard-surface options.

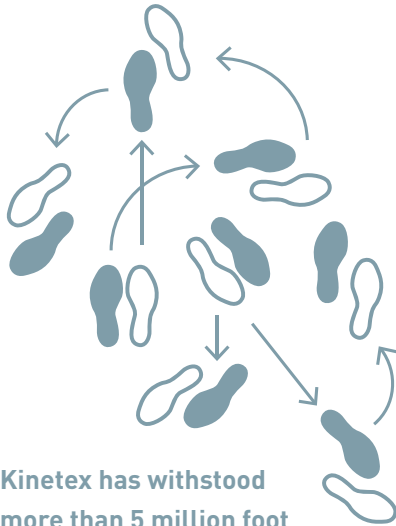
The key to the high-performance attributes of Kinetex lies within its construction. Each layer, when used together, creates a versatile, lightweight, soft-surface flooring designed with qualities parallel to that of hard-surface.

### Kinetex Construction



1. DURABILITY

Kinetex delivers enduring performance, year after year. One of the most thoroughly tested flooring products on the market, it has outstanding dimensional stability and unparalleled crush resistance.



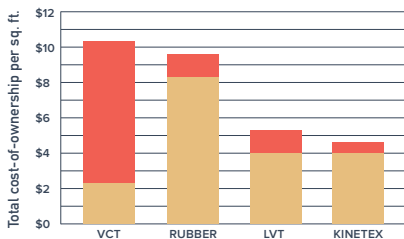
Kinetex has withstood more than 5 million foot traffic events.

2. MAINTENANCE

Tough to wear out, easy to maintain. With vacuuming and encapsulation cleaning, Kinetex looks like new, year after year. Thanks to a lightweight face construction, Kinetex retains less water than carpet and dries faster. It is easily sanitized and resists the most challenging staining agents.

Life Cycle Costs: INSTALLATION AND MAINTENANCE

- Installation & materials cost/ sq. ft.
- 10 years maintenance cost/ sq. ft.



3. MOISTURE TOLERANCE

The most common subfloor, concrete, can release excessive moisture and destroy floor covering systems—unless costly precautions are taken before installation. But moisture mitigation isn't necessary with Kinetex; its breathable nature allows moisture to pass through its backing, instead of trapping it underneath. Kinetex textile composite flooring will perform in elevated RH slabs up to 100%.



100% RH TOLERANCE



BREATHABLE  
No trapped moisture  
3rd party tested and verified



NO VAPOR BARRIER REQUIRED—regardless if the slab is new or old, regardless of hydrostatic pressure

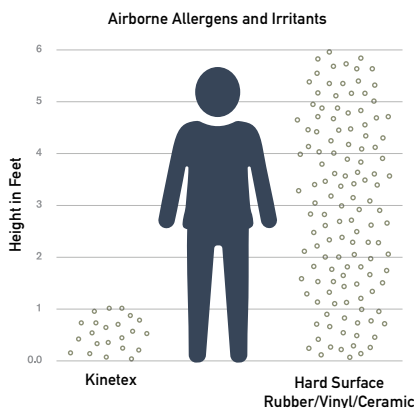


Thousands of installations worldwide since 2012  
NO MOISTURE-RELATED CLAIMS

4. HEALTH

Kinetex minimizes air particulates that trigger allergies and cause infection. It easily surpasses California's 01350 requirements—the most popular U.S. standard for evaluating and restricting VOC emissions indoors.

Easy Breathing

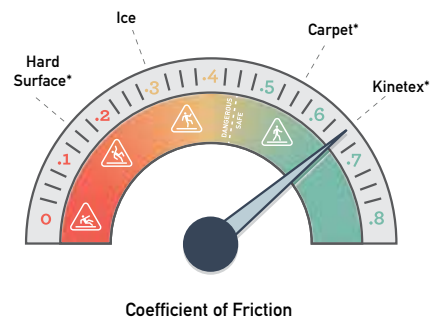


Foot Traffic Dust Emissions Test (ESO Fine Test Dust 12103-142)

5. SAFETY

Kinetex is the only wall-to-wall textile floor covering certified as High-Traction by the National Floor Safety Institute. Its innovative construction creates one of the most slip-resistant flooring surfaces ever tested—wet or dry—to prevent falls before they happen.

Gaining Traction



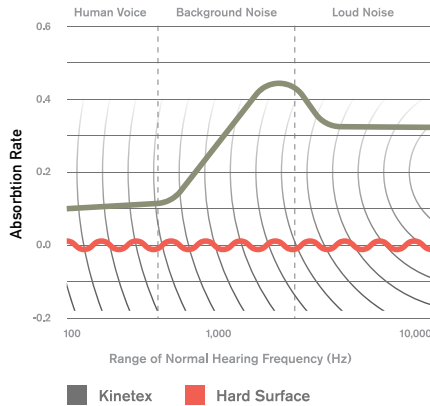
\*wet soapy surfaces



## 6. ACOUSTICS

Kinetex delivers unparalleled acoustic performance, with one of the highest Noise Reduction Coefficients (NRC) and Impact Insulation Classifications (IIC) ratings of any commercial flooring product.

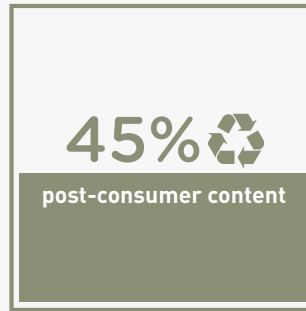
### Keeping Quiet



## 8. SUSTAINABILITY

Made with 45% post-consumer recycled content, each Kinetex tile contains the equivalent of 27 used water bottles. This dematerialized flooring product and its longer life mean that Kinetex has a much smaller environmental footprint than other commercial flooring options. Furthermore, Kinetex is NSF/ANSI-140 Platinum certified (the industry-leading standard for sustainability) and has a Red List Free DECLARE label.

### Second Chances

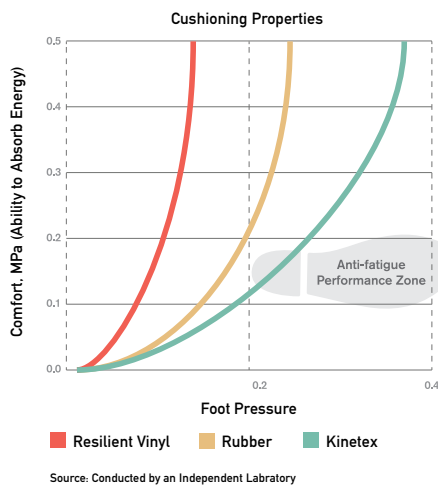


Each Kinetex tile contains the equivalent of 27 plastic water bottles.

## 7. COMFORT

Kinetex, a soft textile surface with a high-density backing, has exceptional anti-fatigue properties and minimal rolling resistance. Because it can absorb energy, Kinetex has the potential to reduce repetitive foot stress injuries and other injuries related to standing and frequent movement from place to place.

### Step-by-Step Support



## KINETEX INSTALLATION

Installing Kinetex is as easy as traditional modular carpet, however special attention should be applied until installers gain experience with module placement. Installers should perform site and material conditioning, surface preparation, and concrete pH and moisture testing as if they were installing carpet modules. Because it is such a lightweight material the modules cut very easily, reducing installation time. Kinetex uses proven adhesive systems with lifetime performance warranties.

### Kinetex Adhesive

Kinetex Adhesive is formulated for Kinetex textile composite flooring products and is built to bond the textile composite to the properly prepared substrates for the life of the installation. Products with Kinetex Adhesive will perform in elevated RH slabs up to 100%.

### PreFix®

PreFix includes a release liner that easily peels away to reveal pre-applied adhesive that securely anchors the Kinetex module in place. Products with PreFix will perform in elevated RH slabs up to 100%, allowing the flooring to be installed without costly moisture mitigation. PreFix offers a quick installation system and it can be added to all Kinetex products as an optional adhesive.

*Please see the Kinetex installation instructions for full installation details.*

## WARRANTIES

We stand behind every aspect of Kinetex and extend certain lifetime warranties. Each warranty is covered for the useful life of the product, provided that installation and maintenance is in accordance with J+J Flooring Group's Kinetex Installation Instructions.

### **Wear Layer Warranties**

- Lifetime Product Performance
- Lifetime Colorfastness to Light & Crocking
- Lifetime Stain Removal
- Lifetime Static Protection

### **Backing Warranties**

- Lifetime Protection from Edge Ravel
- Lifetime Protection from Delamination Failure
- Lifetime Dimensional Stability

## ACCOLADES

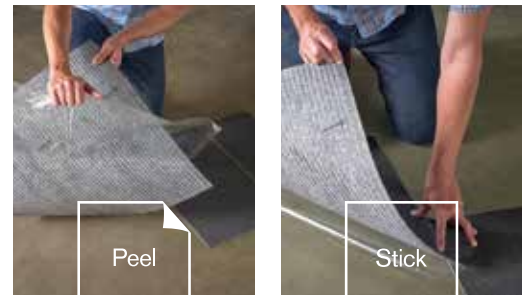
Kinetex is one of the most extensively tested flooring products to ever be introduced. In addition to its unprecedented range of performance attributes, the human-centered qualities and highly functional design have quickly garnered attention. Below is a list of current awards and recognitions that Kinetex has received.

- 2015 Nightingale Award Gold, Hard Surface (Umbra / Umbra Stripe)
- 2015 Best of NeoCon, Hard Surface – Silver Award (Umbra / Umbra Stripe) (Contract Magazine)
- 2014 Top Ten Green Building Product (BuildingGreen, Inc.)
- 2014 Greenstep Award (Floorcovering Weekly)
- 2014 Grand Prize Winner for Product Innovations (Buildings Magazine)
- 2014 Excellence in Product Development (British Institute of Facilities Management)

## ADHESIVES

### **Kinetex® Adhesive**

By design, Kinetex uses J+J Flooring Group's proven releasable Kinetex Adhesive with lifetime performance warranties. Because it is such a lightweight material, the modules cut very easily, reducing installation time. Kinetex also offers the flexibility to simply remove and replace individual modules if conditions warrant a quick fix.



PreFix is a quick installation solution for all Kinetex textile composite flooring products. The release liner easily peels away to reveal a series of pre-applied adhesive strips that securely anchor the Kinetex module in place.

Created specifically for Kinetex, PreFix pre-applied releasable adhesive backing offers the following:

- Highest breathability (250 gms/sm/day) allows up to 99% RH and pH from 7 to 11
- No glue dry time from pre-cured no odor, VOC-free, 100% polymer adhesive
- Controlled USA manufacturing environment assures consistent aggressive tack quality
- Avoids glue inventory, glue transportation charges and disposal of empty buckets
- Recyclable release liner extended edge for easy removal
- Lifetime Warranty -Requires PreFix Primer

*PreFix backing requires PreFix Primer during subfloor preparation*

©2016 J&J Flooring Group, LLC - This unique design is protected under the U.S. Copyright Act of 1976. Any unauthorized copying or duplication of this design constitutes copyright infringement in violation of federal law.

Due to the unique visual characteristics of modular carpets, pattern repeats and pattern run-off seams may appear more noticeable than in broadloom carpets. Such visual characteristics do not constitute a manufacturing defect, and as such, should be considered when selecting modular carpet and its installation.

These photographs are representations of the installation for this modular product. Your modular installation may look different than these photos depending upon individual tile placement, lighting, and overall space layout, including furnishings. Final tile placement and the resulting visual is thus the customer's, and not J+J Flooring Group's responsibility.

\*NRC rating is a measure of the effectiveness of a material in absorbing sound. The higher the NRC rating, the greater the ability of the flooring product to absorb airborne noise. Independent laboratory testing of Kinetex has shown an average NRC rating of 0.33 (bare concrete flooring will typically provide a NRC Rating of 0.015).

\*\*IIC is a rating of the insulation from impact noise. The higher the IIC rating, the greater the sound insulation. Independent laboratory testing of Kinetex has shown an average IIC Rating of .64 (bare concrete flooring will typically provide an IIC Rating of 34) NOTE: Test results and testing laboratory will vary, and the above information is not guaranteed.



style analog 1821 / analog mono 1821

**Physical Characteristics**

wear layer	solution dyed polyester - applied pattern
backing	polyester felt cushion
total weight (nominal average)	1373 g – 1587 g sq/m
total thickness (nominal average)	5.2 mm
dimensions	610mm x 610 mm tiles
packaging	eighteen modules per box, 6.69 sq/m

**Environmental Attributes**

recyclability	100% closed-loop recyclable
recycled content	>55% (post consumer/industrial)
LEED scorecard	IEQ 4.1 and IEQ 4.3
NSF/ANSI 140 certification	platinum

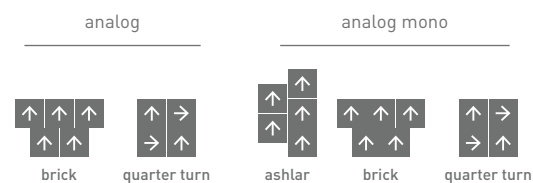
**Testing**

fire test report	AS ISO 9239.1-2003
critical radiant flux (CRF)	6.6kw/m2
electrostatic propensity	less than 3.0 kv
colorfastness to light	rating of 4.0 or greater
colorfastness to crocking	rating of 4.0 or greater
water repellency	rating of 4.0 or greater
appearance retention	4.0 or greater
slip resistance	A54586-2013 Class P5
thermal insulation	0.73
noise reduction coefficient	NRC Rating: 0.30*
impact insulation classification	IIC Rating: 64**
stain resistance	resists most challenging stains

**adhesives**

indoor air quality certification	CRI Green Label Plus™
----------------------------------	-----------------------

**Installation Methods**



# kinetex<sup>®</sup>

*Textile Composite Flooring*

[www.visionary-living.com.au](http://www.visionary-living.com.au) | [www.kinetexaustralia.com](http://www.kinetexaustralia.com)

---

**Visionary Living Commercial Floors & Walls**

[contactus@visionary-living.com.au](mailto:contactus@visionary-living.com.au)

[www.visionary-living.com.au](http://www.visionary-living.com.au)

02 9741 6700

---



VISIONARY LIVING  
COMMERCIAL FLOORS  
& WALLS