



## **DISCLAIMER: Second-Hand Plant Condition and Safety**

This document is Jungheinrich Australia Pty Ltd's (**Jungheinrich**) official notice that the second-hand plant offered for sale through this transaction (direct sale or auction) may contain faults or deficiencies that could pose risks to health and safety.

### **Important Information**

#### **Safety & Compliance of the Plant**

Given the plant is second-hand, please be aware it may include wear and tear, or be missing safety features that were not present or required at the time of original manufacture.

Jungheinrich has taken all reasonably practicable steps to identify any faults in the plant. The **enclosed** Condition Report sets out the current condition of this plant, including any identified faults.

While all efforts have been made to identify faults, there may be other faults present that did not show up at time of inspection

#### **Operational Safety Notice**

The plant should not be used until all identified faults have been rectified and the equipment is deemed safe for operation.

It is the responsibility of the purchaser to ensure that the plant is inspected, serviced, and, if necessary, modified to meet current safety standards before use.

By participating in this sale and purchasing the second-hand plant, the purchaser acknowledges receipt of this notice and accepts full responsibility for ensuring the plant is safe for use.

#### **Operating condition of the plant**

Note: this condition report is a safety report only and does not represent overall appearance or operating condition of the plant

For any questions please contact Jungheinrich



## Used Sale Safety & Compliance Check

MHE-000128 / 124173 / Brett Parker / 24/12/2025 / Jungheinrich / EFG218K

Complete

Flagged items

0

Report ID

MHE-000128

Technician Name

Brett Parker

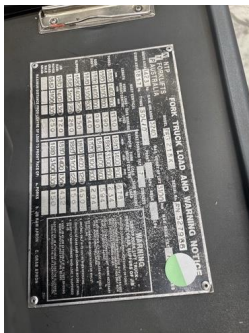


Photo 1



Photo 2



Photo 3



Photo 4



Photo 5



Photo 6



Photo 7



Photo 8

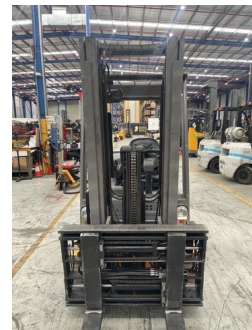


Photo 9



Photo 10



Photo 11

<b>Conducted on</b>	24/12/2025 11:10 AM AEDT
---------------------	--------------------------

<b>Branch</b>	Sydney
---------------	--------

**Unit Details**

<b>Equipment No.</b>	124173
----------------------	--------

<b>Brand</b>	Jungheinrich
--------------	--------------

<b>Model</b>	EFG218K
--------------	---------

<b>Mast ID</b>	GE120-310ZZ
----------------	-------------

**Include Images of the Front, Rear & Sides of the Unit**



Photo 12



Photo 13



Photo 14



Photo 15



Photo 16

**Observations Summary**

<b>Truck Category</b>	Category 4 - IC Counterbalance
-----------------------	--------------------------------



**Seat switch and seat belt switch fitted to check presence of operator & working in sequence?**

Yes



Photo 17

**Emergency Stop (if fitted), Horn/Warning device, lights, reverse alarm and flashing lights operational**

Yes



Photo 18



Photo 19



Photo 20

**Are brakes and park brake functioning correctly?**

Yes

**Are tyre treads within limits and/or free from damage?**

No



Photo 21



Photo 22



Photo 23

**Are fork tynes in good condition and within specification?**

Yes



Photo 24

Are mast chains in good condition, within specification and working correctly?	Yes
Are all controls inc. lift, tilt & sideshift/auxilliary functions working correctly	Yes
Confirm safety systems not bypassed or malfunctioning?	Yes

Additional Observations & Actions

List any other notable defects or faults e.g. ROPS/FOPS damage etc.

Front right park light  
Charger not tested, Fitted with euro plug.  
Forklift fitted with aftermarket battery

Technician Sign off

Brett Parker  
24/12/2025 11:46 AM AEDT

## Media summary

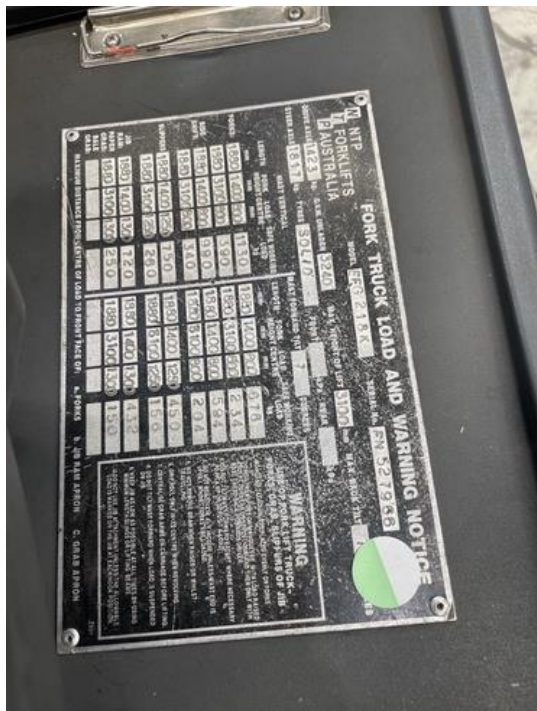


Photo 1



Photo 2



Photo 3



Photo 4





Photo 5



Photo 6



Photo 7



Photo 8



Photo 9



Photo 10



Photo 11



Photo 12





Photo 13



Photo 14



Photo 15



Photo 16



Photo 17



Photo 18



Photo 19



Photo 20





Photo 21



Photo 22



Photo 23



Photo 24