



DISCLAIMER: Second-Hand Plant Condition and Safety

This document is Jungheinrich Australia Pty Ltd's (**Jungheinrich**) official notice that the second-hand plant offered for sale through this transaction (direct sale or auction) may contain faults or deficiencies that could pose risks to health and safety.

Important Information

Safety & Compliance of the Plant

Given the plant is second-hand, please be aware it may include wear and tear, or be missing safety features that were not present or required at the time of original manufacture.

Jungheinrich has taken all reasonably practicable steps to identify any faults in the plant. The **enclosed** Condition Report sets out the current condition of this plant, including any identified faults.

While all efforts have been made to identify faults, there may be other faults present that did not show up at time of inspection

Operational Safety Notice

The plant should not be used until all identified faults have been rectified and the equipment is deemed safe for operation.

It is the responsibility of the purchaser to ensure that the plant is inspected, serviced, and, if necessary, modified to meet current safety standards before use.

By participating in this sale and purchasing the second-hand plant, the purchaser acknowledges receipt of this notice and accepts full responsibility for ensuring the plant is safe for use.

Operating condition of the plant

Note: this condition report is a safety report only and does not represent overall appearance or operating condition of the plant

For any questions please contact Jungheinrich



Used Sale Safety & Compliance Check

MHE-000140 / 120312 / Udesch Ganepola / 20/01/2026 / Jungheinrich
/ ETV114

Complete

Flagged items	0
---------------	---

Report ID	MHE-000140
-----------	------------

Technician Name	Udesch Ganepola
-----------------	-----------------

Conducted on	20/01/2026 8:47 AM ACDT
--------------	-------------------------

Branch	Adelaide
--------	----------

Unit Details

Equipment No.	120312
---------------	--------



Photo 1

Brand	Jungheinrich
-------	--------------

Model	ETV114
-------	--------



Photo 2

Mast ID	GE115-680DZ
---------	-------------

Include Images of the Front, Rear & Sides of the Unit

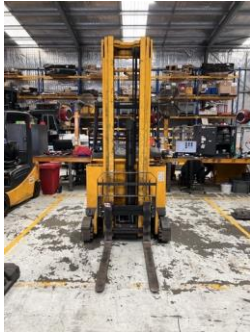


Photo 3



Photo 4



Photo 5



Photo 6

Observations Summary

Truck Category	Category 5 - Electric Reach Truck
Emergency Stop, Horn/Warning device, lights, reverse alarm and flashing lights operational	Yes
Foot switch allows operation only when depressed	Yes
Seat switch and seat belt operate sequentially (site dependent)	N/A
Mast switch operation for travel speed reduction to 3km/h above specified height	Yes
Are brakes and park brake functioning correctly?	Yes
Are tyre treads within limits and/or free from damage?	Yes
Are fork tynes in good condition and within specification?	Yes



Photo 7

Are mast chains in good condition, within specification and working correctly?

Yes



Photo 8

Are all controls inc. lift, tilt & sideload/auxiliary functions working correctly

Yes

Confirm safety systems not bypassed or malfunctioning?

Yes

Additional Observations & Actions

List any other notable defects or faults e.g. ROPS/FOPS damage etc.

Technician Sign off

Udesb Ganepola
20/01/2026 8:57 AM ACDT

No charger available with the unit.
Seat bottom cover damaged.
No manuals.
Service is due according to the service decal.

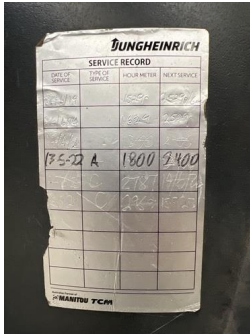


Photo 9



Photo 10



Photo 11

Media summary



Photo 1



Photo 2

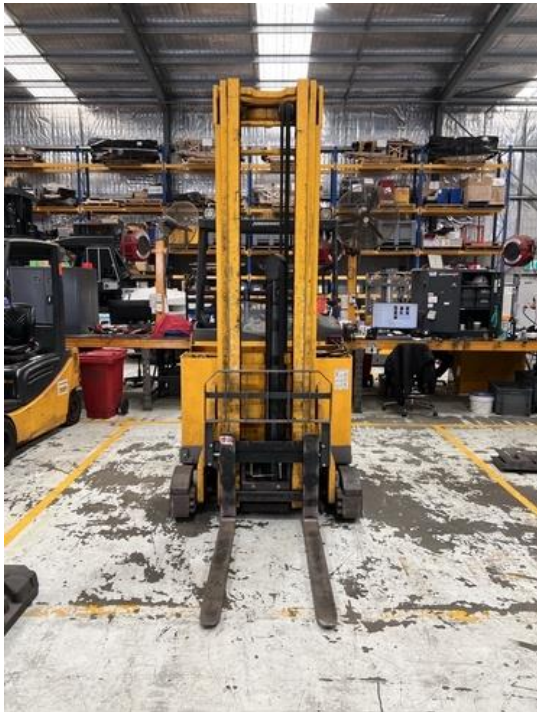


Photo 3



Photo 4



Photo 5



Photo 6



Photo 7



Photo 8

